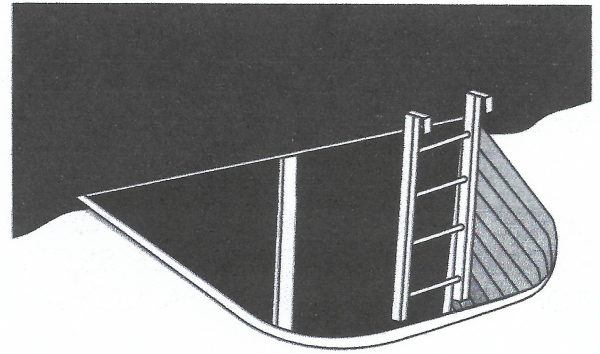


BASEMENT WINDOW SYSTEMS Safety Section

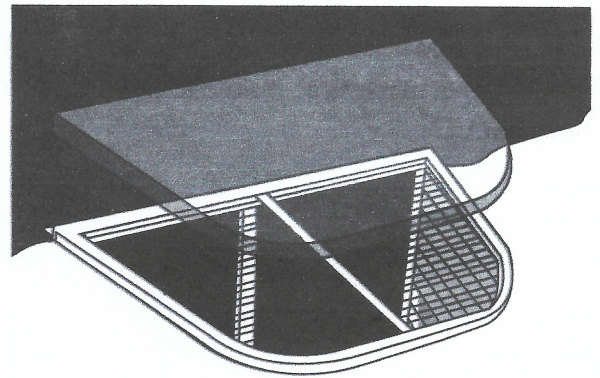
To download instructions for later viewing, go to the File Menu, then Save As... and save to desired location.

Welcome to the Safety Section

To meet IRC 2000 Egress Code, attach ladder to well with sheet metal screws using pre-drilled holes on ladder.



Prevent accidental fall-ins with Boman Kemp safety grates and clear lexan covers. Safety grates and covers prevent children, animals, debris, and water from entering area well.



Ladder Installation

(Always Use Job Specific Personal Protective Equipment)

A. Tool List (Suggested)

1. Cordless drill
2. 3/8" nut driver

B. Materials List

Ladder Length	Screw Quantity	Screw Type
4'	2	#14 x 1.25" non-corrosive self-drilling screw
5'	4	#14 x 1.25" non-corrosive self-drilling screw
6'	6	#14 x 1.25" non-corrosive self-drilling screw
7'	6	#14 x 1.25" non-corrosive self-drilling screw

C. Installation Procedure

1. Hook ladder over top of Easy-Well™ along rear profile. Center left to right. Make sure that the vertical flat stock is perpendicular to the Easy-Well™ ribs.
2. Attach self-drilling screws with screw gun until they make contact with ladder. **DO NOT OVER TORQUE** as this may result in the screws spinning out.